

# Island House Training Centre



Legal-Island, Island House, Station Road, Antrim BT41 1BH

Telephone: 028 9446 3888

Fax: 028 9446 3516

Email: [meetings@legal-island.com](mailto:meetings@legal-island.com)

We offer a flexible alternative to a hotel training room or a welcome distraction from your own premises – you can even relax in our outdoor seating area during breaks.

## IDEAL LOCATION

Centrally located between Belfast and Derry/Londonderry and with excellent transport and road links, Antrim makes the perfect location wherever you are based.

- Located five miles from Belfast International Airport
- Situated next to Antrim Railway & Bus Station
- Excellent transport links – just one mile from the M2 motorway
- Ample Private & Free Car Parking for all delegates

## IDEAL FACILITIES

The Island House Training Centre caters for up to 40 delegates, with the option of full days, half days or simply an hour's time slot.

A high standard of service is guaranteed, whether you need a room for training, an important event or a business meeting.

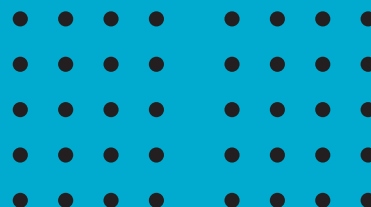
### Key Features:

- Highly competitive rates
- Flexible pricing by the hour, half day or full day
- Ample free car parking
- Excellent public transport links
- The main conference suite benefits from natural daylight
- Varied catering options
- Contemporary and welcoming reception
- Outdoor seating area

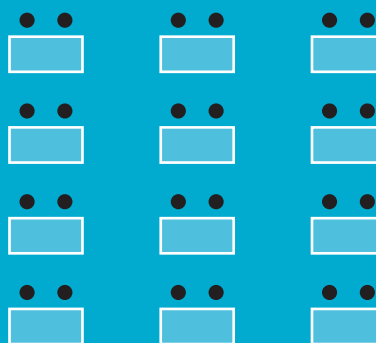
### Added Value:

- Multi-access WiFi internet
- We offer business support e.g. photocopying, faxing etc (incurs small charge)
- Flipchart, screen and data projector are included in room hire

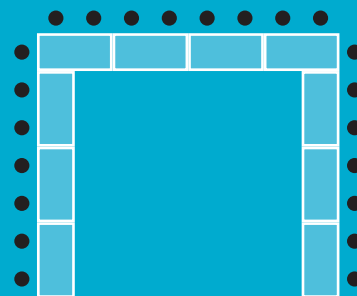
### Theatre (40)



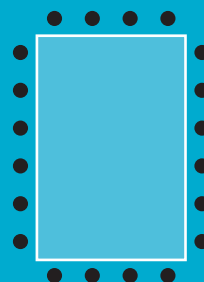
### Classroom (24)



### U shape (22)



### Boardroom (20)



## IDEAL LAYOUT

Conference Suite: **40 theatre ~ 24 classroom ~ 22 U shape ~ 20 boardroom**  
(Additional room available for breakout sessions)

The Island Suite is a conference suite that benefits from natural daylight and can seat up to 40 people. Seating can be arranged in theatre, classroom, boardroom, U shape or any other style required.

The Island Suite comes complete with a ceiling mounted data projector and screen.

## ROOM HIRE RATES

- Cost of Conference Room  
Hourly rate between 9am and 5pm (minimum 2 hours) £90 p/day ~ £60 p/half day  
Hourly rate between 5pm and 10pm £15  
Saturday rate £20  
Available on request
- Cost of Laptop (subject to availability) £60 p/day

## CATERING

- Selection of teas, coffee and biscuits £2.50 pp
- Selection of teas, coffee and scones/mini muffins/pastries £3.50 pp
- Soup & wheaten bread £4 pp
- Sandwiches £5.50 pp
- Soup, wheaten bread & sandwiches £7 pp
- Finger buffet & sandwiches £7.50 pp

*(All of the above selections are served with tea/coffee)*

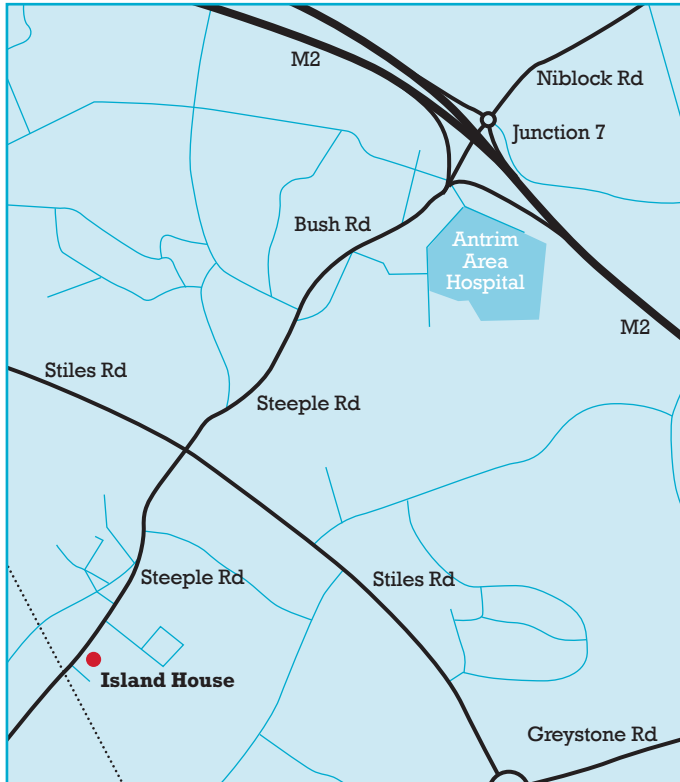
- Fruit platter £1.50 pp
- Traybakes £2 pp

If you have any special dietary requirements please contact Donna on 028 9446 3888.



# Island House Training Centre

The Ideal Place for your Conference ~ Meeting ~ Company Training



## DIRECTIONS

Travelling from BELFAST or DERRY/LONDONDERRY

- Travel on the M2 motorway coming off at J7/Antrim Hospital turn off
- Take the road signposted for Antrim travelling straight down the road for about a mile passing a housing development on your left
- At the traffic lights get into the middle lane and go straight through ignoring the temptation to turn either left or right
- Travel straight over the mini roundabout to traffic lights (you will see Camden Frames on your left and Antrim Grammar School on your right)
- Turn left at the traffic lights and right at the mini roundabout
- Travel straight for 200 metres ignoring the sign/turning for Steeple Road Industrial Estate and you will see Legal-Island on the left hand side just before the level crossing

## Please Note

- Our SatNav location is N54043.135' W6012.636'
- Our postcode BT41 1BH on Google maps/SatNav gets you close but not to us exactly – we're actually diagonally opposite where these systems indicate.
- If you have difficulties finding us ask for Antrim Train Station – everyone in Antrim knows this.  
  
If you don't see us on the way to the train station, go over the level crossing and we're on the right hand side after 100 metres.
- Call us if you need directing in. Our number is 028 9446 3888 (office hours).
- A photo of our building is here: <http://www.legal-island.com/about-us/>
- Google Map Link: <http://bit.ly/19IY1q>

Travelling From CRUMLIN ~ BELFAST INTERNATIONAL AIRPORT

- Travelling from the Crumlin direction up the Oldstone Road continue via Muckamore under the railway bridge and then turn right at the traffic lights when the road expires
- Continue along the (Belfast) road for about 500 metres taking the first main left up Ballycraigy Road (ignore smaller roads that take you into the estate)
- At the top of the Ballycraigy Road is a roundabout – go straight over taking the second left
- Continue for about half a mile taking a left at the next set of traffic lights
- Travel straight over a small roundabout and continue to the main set of traffic lights (you will see Antrim Grammar School on your right hand side and Camden Frames on your left)
- Turn left at the traffic lights and right at the very small roundabout. Travel straight for 200 metres ignoring the sign/turning for Steeple Road Industrial Estate and you will see Legal-Island on the left hand side just before the level crossing



legal-island

Legal-Island, Island House, Station Road, Antrim BT41 1BH

Telephone: 028 9446 3888 Fax: 028 9446 3516 Email: [meetings@legal-island.com](mailto:meetings@legal-island.com)

[www.legal-island.com](http://www.legal-island.com)